



OFFERS IN EXCESS OF

£600,000

Kinsale Road

London, SE15 4HL

**GARETH
JAMES**

PROPERTY SUMMARY

An impressive contemporary two-bedroom apartment extending to 797 sq ft, finished to a high specification and benefitting from a private, sun-filled courtyard garden, set within a close-knit boutique development in the heart of Peckham.

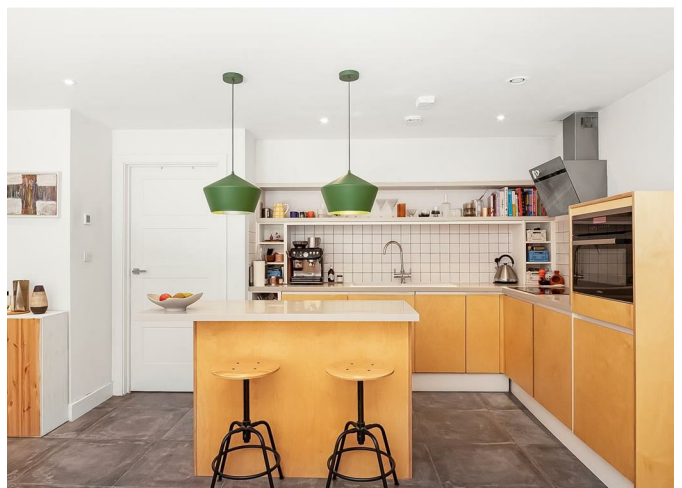
2



2



1

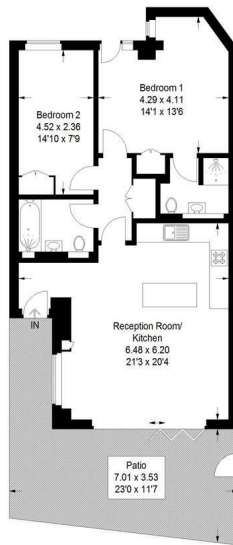






Kinsale Road, SE15

Approximate Gross Internal Area
74.0 sq m / 797 sq ft



Lower Ground Floor

This plan is for layout guidance only. Not drawn to scale unless stated. Windows and door openings are approximate. Whilst every care is taken in the preparation of this plan, please check all dimensions, shapes and compass bearings before making any decisions reliant upon them. (ID1305252)

2	
2	
1	

Energy Efficiency Rating		
	Current	Potential
<i>Very energy efficient - lower running costs</i>		
(92 plus) A		
(81-91) B		
(69-80) C		
(55-68) D		
(39-54) E		
(21-38) F		
(1-20) G		
<i>Not energy efficient - higher running costs</i>		
England & Wales	EU Directive 2002/91/EC	

Agents Note: Whilst every care has been taken to prepare these particulars, they are for guidance purposes only. All measurements are approximate and are for general guidance purposes only and whilst every care has been taken to ensure their accuracy, they should not be relied upon and potential buyers/tenants are advised to recheck the measurements

GARETH JAMES	OFFICE ADDRESS	OFFICE DETAILS
	129 Bellenden Road London SE15 4QY	02077324330 sales@garethjames.com https://www.garethjames.com/